



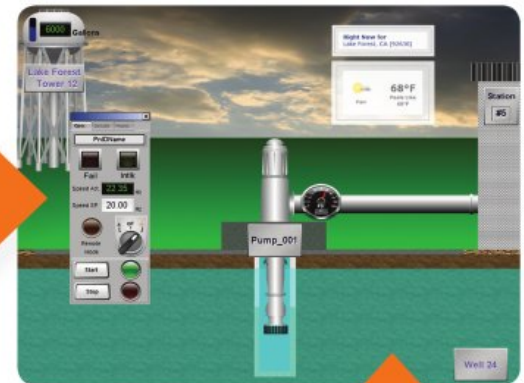
Summary

This library, built on the Wonderware System Platform, provides a collection of basic components for the implementation of distributed water and wastewater applications.

Business Value

- Enables faster project implementation
- Empowers engineering efficiency
- Allows reuse of engineering
- Helps adoption of standards
- Fuels consistency in application design

Wonderware Industry Pack for Water & Wastewater



DELIVERING INDUSTRY-SPECIFIC SOLUTIONS THROUGH ADVANCED SOFTWARE AND MODULAR COMPONENTS

"The Wonderware® Industry Pack for water and wastewater is a growing library of ArchedrA® object templates, ArchedrA graphics and faceplates for use in the corresponding collection, transportation and distribution portion of water and wastewater SCADA applications."

The Industry Pack leverages the power of the Wonderware System Platform to assist System Integrators (SIs), Value Added Resellers (VARs) and End Users in the water and wastewater industry to:

- Deliver projects faster to improve return on investment
- Easily adopt good development practices to improve application quality
- Achieve more efficient engineering for greater system functionality
- Assist in the adoption of operations standards to drive consistency



ArchedrA object templates include the associated ArchedrA graphics which encompass ISA symbols, one or more physical representations and corresponding faceplates.

Templates included in the Industry Pack functionality represent:

- Multiple station types: single or multiple pump stations, lift stations, boost stations and more
- Storage: ground-level, below-level and elevated
- Valves of the most popular types: ball, butterfly, needle and others
- Flow Meters with diverse physical elements
- Chemical Feed Systems
- Generators